

Welcome to Year 3



Meet the team



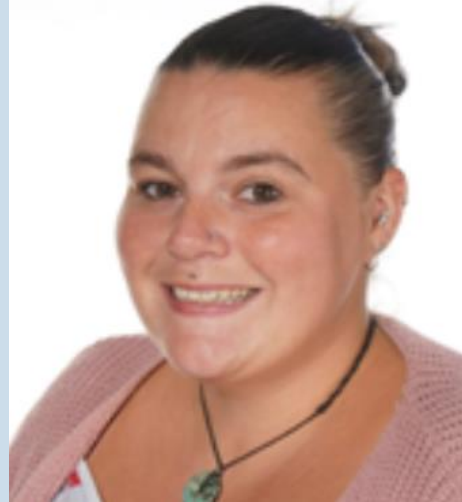
Mr Naik

Rowan class teacher



Miss Aust

Hazel class teacher



Mrs Holdcroft

Personal Welfare Assistant
Drawing and talking
practitioner



Miss Owen

Personal Welfare Assistant



Miss Mayo

Teaching Assistant

Key Dates

Autumn term	Spring term	Summer term
25th September – Individual Photographs 16th October – Autumn disco 21st and 23rd October – Parents evening 11th November – Year 3 remembrance assembly 26th November – Stone age day (in school) 5th December – Christmas Fayre 11th December – KS2 carol concert at the church 16th December – Panto in school	16th January – Andy Tooze poet in school W.C 2 nd March – Mother's Day events (PTFA) 5 th March – World Book Day 25 th March – Easter service at the church	21 st May – May Fayre 5 th June – Class photos W.C 15 th June – Father's Day events (PTFA)

Weekly timetable

	8.45 – 8.55	9.00 – 10.00	9.15 – 10.05	10 – 10.20	10.20 – 10.40	10.40 – 10.55	10.55 – 12.15	12.15 – 1.00	1 – 2	2 - 3	3.00- 3.15	
Monday	Morning Task	9-9.15 Mastering number	9.15 – 10.05 Maths	10 – 10.30 Guided reading	Spelling	Break	Handwriting	English	Lunch	Art (Rowan) RE & PSHE (Hazel)	Music Assembly	Whole class reading
Tuesday	Morning Task	9-9.15 Mastering number	9.15 – 10.05 Maths	10 – 10.30 Guided reading	Spelling	Break	Handwriting	English	Lunch	History	Geography	Whole class reading
Wednesday	Morning Task	9-9.15 Mastering number	9.15 – 10.05 Maths	10 – 10.30 Guided reading	Spelling	Break	Handwriting	English	Lunch	Science	Computing Times tables	Whole class reading
Thursday	Morning Task	9-9.15 Mastering number	9.15 – 10.05 Maths	10 – 10.30 Guided reading	Spelling	Break	Handwriting	English	Lunch	French	PE	Whole class reading
Friday	Morning Task	9 – 9.30 Assembly	9.30 – 9.40 Mastering number	9.40 – 10.40 Maths	Spelling test	Break	Handwriting	English	Lunch	Art (Hazel) RE & PSHE (Rowan)	DT	Whole class reading

This timetable is subject to change.

Curriculum overview

		Autumn 2024		Spring 2025		Summer 2025	
Year 3	History	Through the Ages		Romans		How have children's lives changed?	
	Science	Human nutrition	Rocks	Forces and Magnets	Forces and Magnets	Plant Nutrition	Light and shadows
	Art & Design	Ammonite, Drawing and Clay, Tone	Pre-historic pots, Clay, Pattern and Form	Colour theory, Painting, Colour	Botanicals, weaving and multimedia, texture	Motifs, Printing, Line and Shape	Urban Landscapes, drawing, tone
	D&T	Computing in DT	Mechanics	Textiles cross stitch	Structures	Cooking	
	Geography	Our World		Our Earth		Rainforests	Local study
	RE	What makes us human?	Where do our morals come from?	Is scripture central to religion?	What happens if we do wrong?	Why is water symbolic?	Why is fire used ceremonially?
	Computing	Systems and Networks – Connecting Computers	Data and information – Branching database	Creating Media – Animation	Programming A – Sequence in Music	Creating media – Desktop Publishing	Programming B – Events and Actions

PE information

Children will be expected to come to school in their PE kit on *Thursdays* and remain in it for the whole day.

PE Kit:

White t-shirt/Polo shirt

Royal blue or black shorts

Trainers

Navy Blue or black Tracksuit (joggers & hoodie)



English texts

Autumn 1

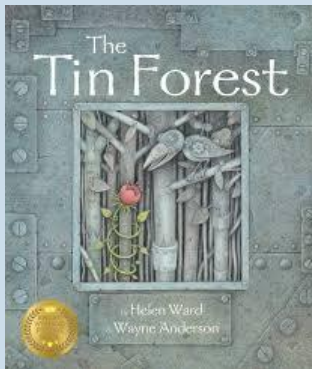
Boy and the Giant
by David Litchfield



The Sound
Collector poem
By Roger McGough

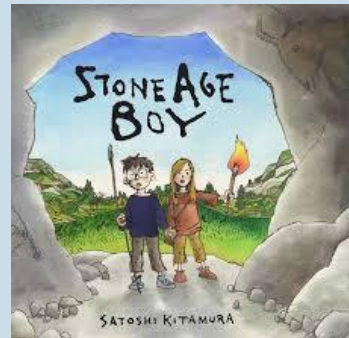
Autumn 2

The Tin Forest
By Helen Ward



Spring 1

Stone Age Boy
By Satoshi Kitamura



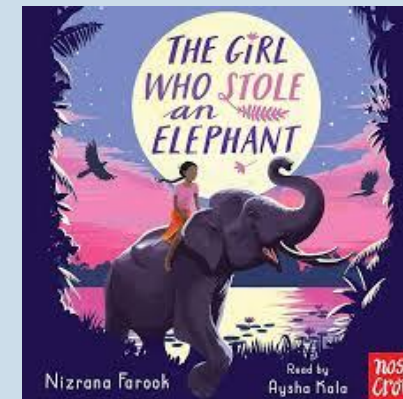
Spring 2

The True Story of
the Three Little Pigs
By Jon Scieszka



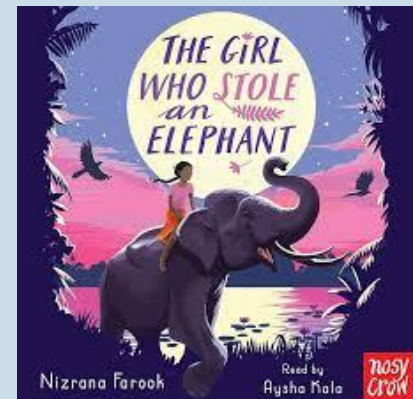
Summer 1

The Girl who stole an
Elephant
by Nizrana Farook



Summer 2

The Girl who stole an
Elephant
by Nizrana Farook



Trips and Experiences

Trip/experience	When?	Cost per child
Outback2Basics Stone Age experience day	26 th November 2025	£6.04
Wightwick Manor	TBD	Free

Throughout the year, children will go on local walks to Perton Library. Parents and carers will be notified about this via Class Dojo.

How can you help?

Encourage children to read 5 times a week

Practise times tables at home (useful website -

<https://www.topmarks.co.uk/maths-games/hit-the-button>)

Complete spelling and maths homework on EdShed

EdShed



Need to get in touch?

- We are available through Class Dojo (8am-4:30pm) to respond to any questions or concerns.
- Any messages and class updates will be posted through Class Dojo for parents to see.
- General school enquiries should be reported to the office.
- We are available on the Year 1 door mornings and afternoons for any messages/notices.

